

Drostdy Hotel

Graaff-Reinet, Eastern Cape

Architects: **dhk**
 Project Team: **Derick Henstra,**
Renske Haller, Aram Lello,
David Talbot, Wardah Razak,
Etienne Barnard
 Structural Engineers: **Aurecon**
 Mechanical Engineers: **Aurecon**
 Electrical Engineers: **Aurecon**
 Landscape Architect: **Blok Designs**
 Quantity Surveyor: **De Leeuw Group**
 Interior Designer: **Stephen Falcke**
 Interior Design
 Fire: **Aurecon**
 Environmental: **Moorhouse**
 Consulting
 Heritage: **Urban Concepts; Moffat/**
Whitlock Architects
 Land Surveyor: **Setzkorn & Van der**
Walt Professional Land Surveyors
 Contractor: **GVK Siya Zama**
 Photographer: **Wieland Gleich**
 Text: **dhk**

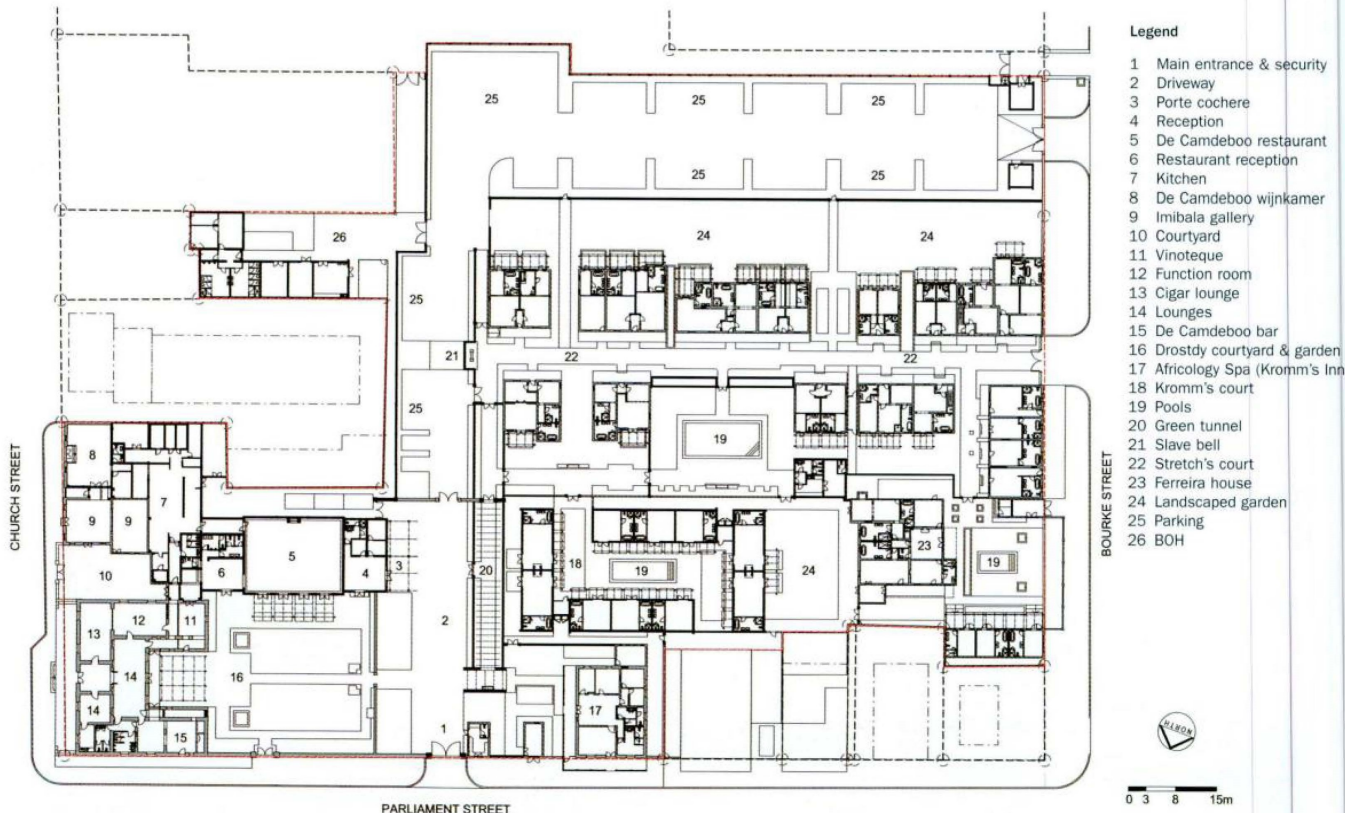
32° 15'07.8"S
 24° 32'09.0"E

The redevelopment of the Drostdy Hotel sought to seamlessly integrate some existing historic buildings with a number of new interventions, transforming the complex into a luxury five-star country hotel. The project involved developing a masterplan for the entire site, sensitive restoration of significant historic buildings, and the design of discreet new architectural insertions.

The reinvigorated property now accommodates 48 new luxury hotel rooms with three swimming pools, a fine dining restaurant, bar and lounges, art gallery, wine shop, vinothèque, and spa as well as associated hotel amenities set within fully landscaped grounds. Open spaces between the various complexes function as shady

courtyards, activated by means of swimming pools and terraces. The new interventions were designed to sit sensitively within the historic fabric, and respond in design and material to the contrasting Cape Dutch and Victorian aesthetics.

The existing Drostdy Hotel building, which has operated as a hotel since 1867, was carefully refurbished, making use of all its original materials including its yellowwood timber flooring, stinkwood and yellowwood doors and beautiful sash windows. The building now houses a cigar lounge, formal lounge, ladies bar, boardroom/dining room and vinothèque as well as offices and ablution facilities, forming the heart of the hotel's public areas.



Site plan

Other buildings on the site were also sensitively restored to accommodate new uses: two adjacent Victorian buildings on Church Street were converted into an art gallery and wine shop; the existing Victorian Kromm's Inn was converted into a spa and gym; the 15 historic Karoo-style flat-roofed cottages along Stretch's Court and the Ferreira House and Bar were turned into accommodation for hotel guests

Contemporary additions include the new reception building and porte-cochere facing the entrance driveway court; a new restaurant building adjacent to the Drostdy Hotel with its terrace opening out onto the courtyard garden; and the new Kromm's Court buildings housing 10 hotel suites

in four buildings positioned around a new swimming pool.

The parking area has been located at the rear of the site behind the final row of Stretch's Court cottages. Existing 1970s back-of-house areas were demolished and replaced with new facilities, with other amenities positioned discreetly behind the adjacent municipal building.

The restoration project has returned the Drostdy Hotel to its former grandeur and has re-established its reputation as the finest accommodation in Graaff-Reinet.

